



P A R A G O N
S O L U T I O N S

presents



a brand reinvented

design done right

© 2020 Paragon Solutions

THE ASSIGNMENT

reinvent a brand

the challenge

When Enmark, realized that their tired, fuel-centric brand no longer represented them, they tasked Paragon Solutions with creating a new brand identity that would embody the vision and future of the company.

the solution

Develop a new brand that communicates fresh food and healthy food choices. A brand that would appeal to woman and millennials but not alienate other demographics, and, retain a tie of the current brand.

the results

Enmarket. A new name that better represents the brand yet has a tie to the legacy of Enmark.

A best in class, prototype, store design that would communicate the new fresh and modern value proposition and the evolution of the brand.

A FUEL-CENTRIC BRAND



NEW BRAND IDENTITY



name & logo



prototype store



food service



beverages



forecourt



sub-brands



touchpoints



car wash

NAME & LOGO

THE EVOLUTION

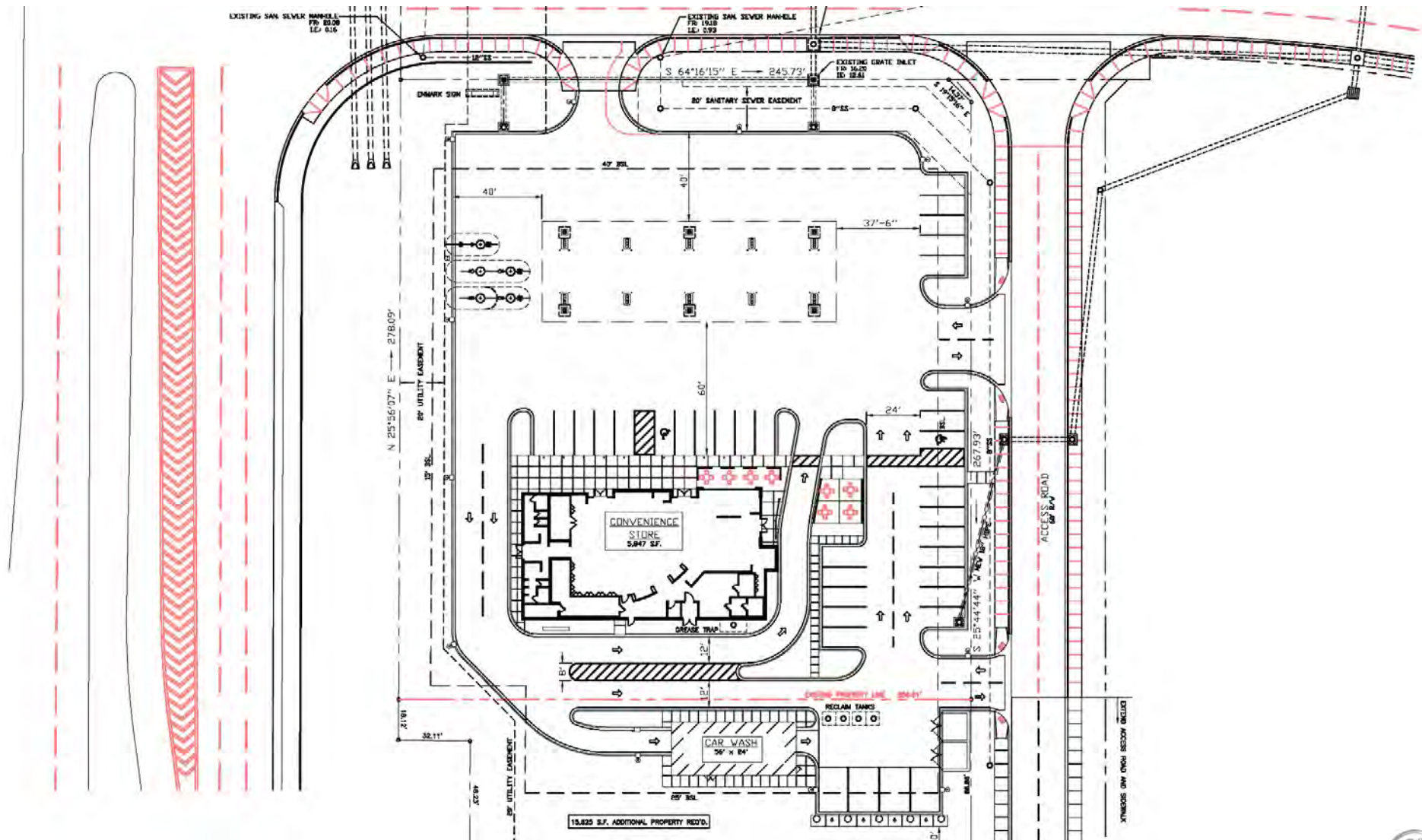


THE REVOLUTION

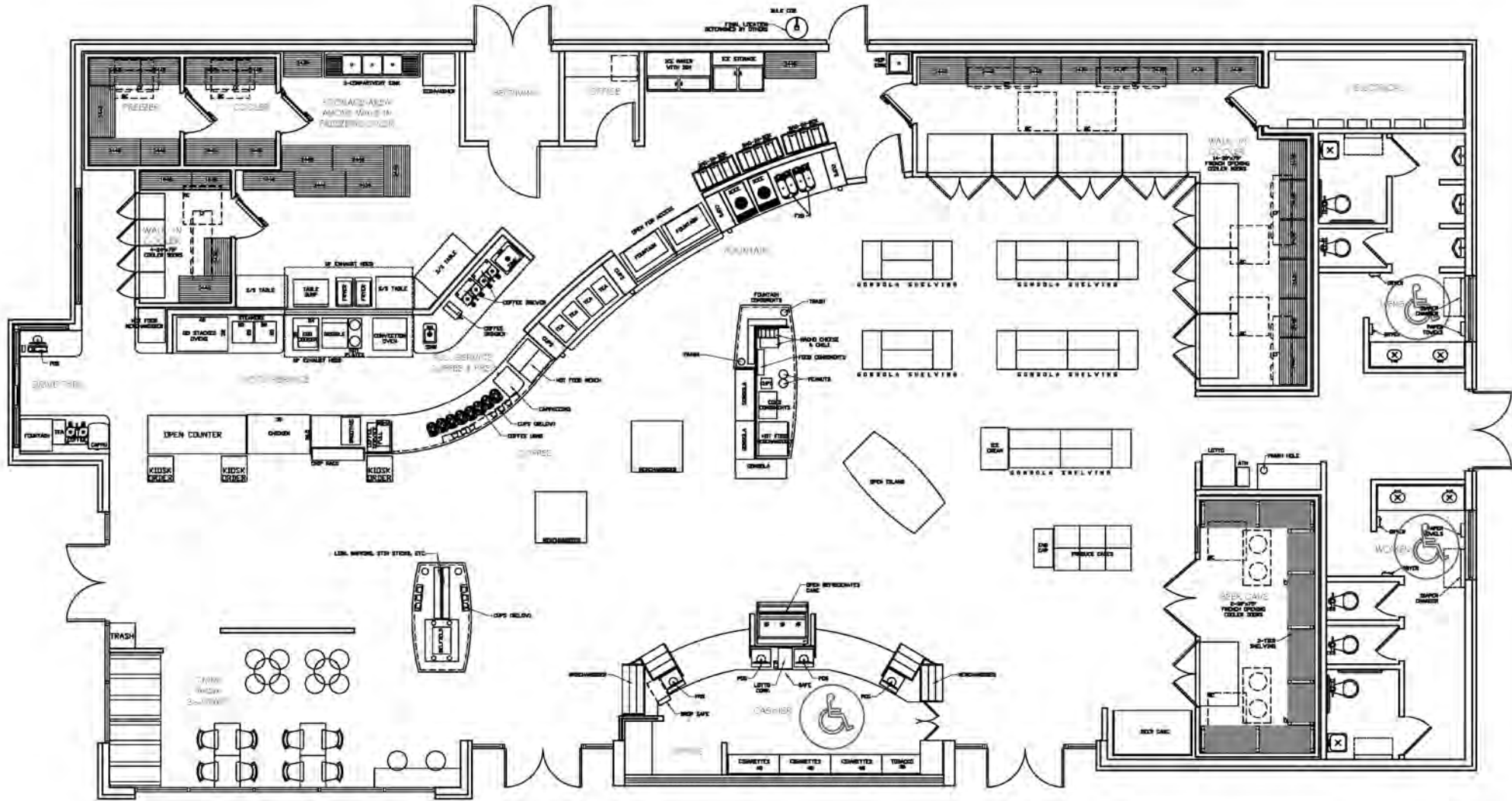


PROTOTYPE STORE

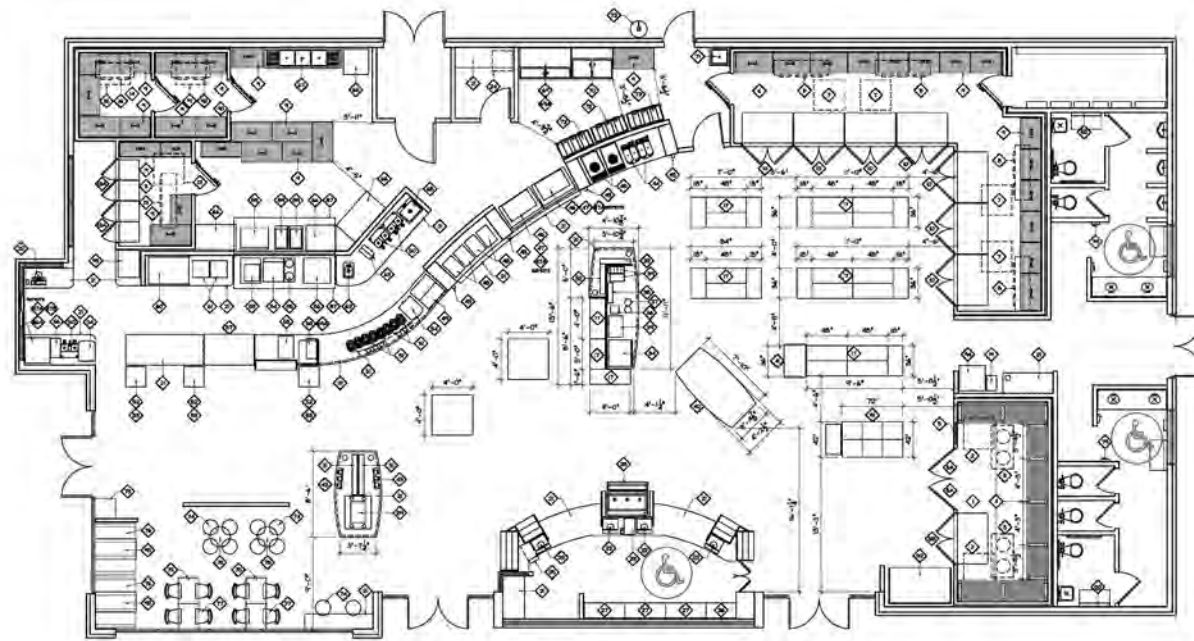
SITE PLAN



LAYOUT



EQUIPMENT



NOTE: EQUIPMENT VENDORS RESPONSIBILITY TO NOTIFY THE ELECTRICAL ENGINEER OF ANY CHARGES OR MODIFICATIONS OF THE EQUIPMENT FOR PROPER ELECTRICAL REQUIREMENTS

[illegible]

© 1998 by The McGraw-Hill Companies

[illegible]

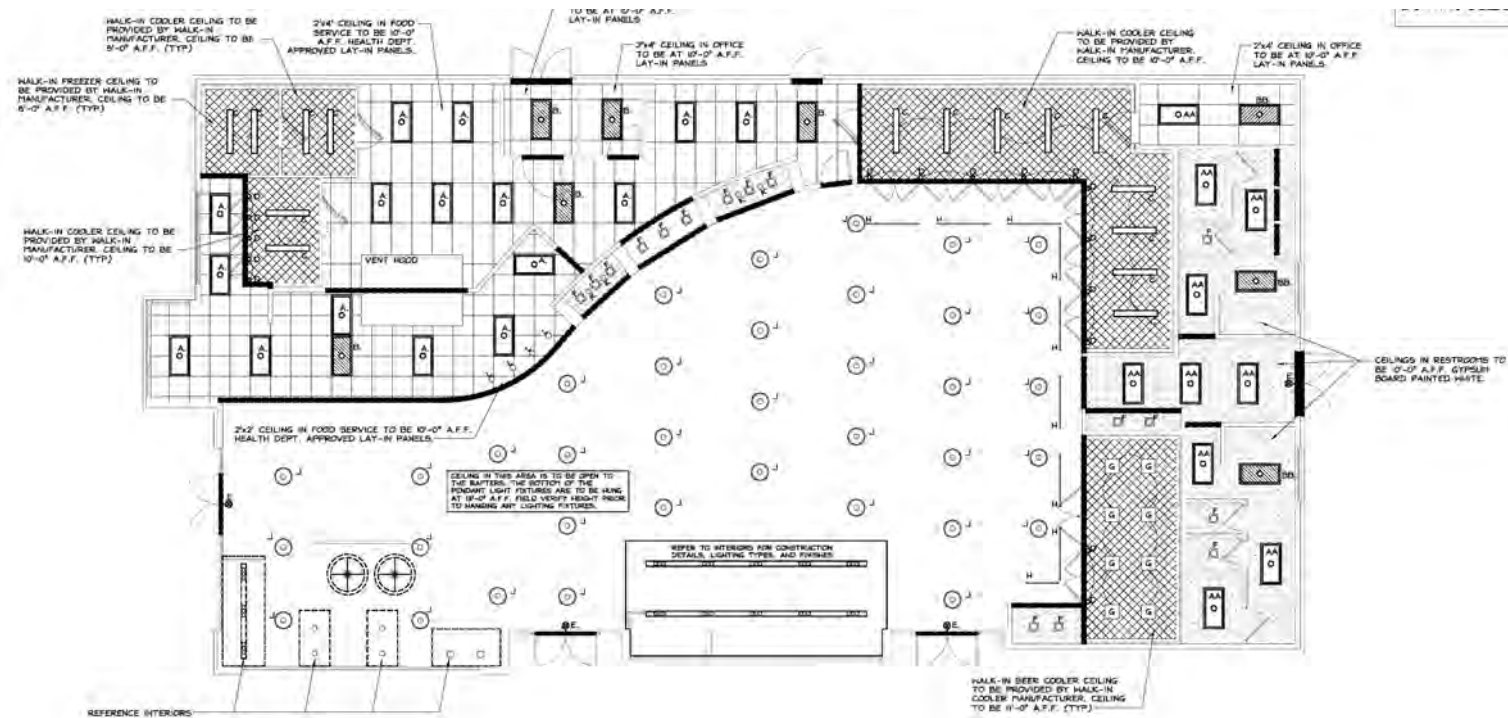
COWBOY MUSIC / FIVE SONGS



ITEM	DESCRIPTION	QTY	UNIT	ELECTRICAL	REMARKS
75	MANUFACTURER				
76	1/2" PIPER INSULATED	1	FEET-L	VALVE	
77	1/2" PIPER INSULATED	1	FEET-L	VALVE	
78	1/2" PIPER INSULATED	1	FEET-L	VALVE	
79	1/2" PIPER INSULATED	1	FEET-L	VALVE	
80	1/2" PIPER INSULATED	1	FEET-L	VALVE	
81	1/2" PIPER INSULATED	1	FEET-L	VALVE	
82	1/2" PIPER INSULATED	1	FEET-L	VALVE	
83	1/2" PIPER INSULATED	1	FEET-L	VALVE	
84	1/2" PIPER INSULATED	1	FEET-L	VALVE	
85	1/2" PIPER INSULATED	1	FEET-L	VALVE	
86	1/2" PIPER INSULATED	1	FEET-L	VALVE	
87	1/2" PIPER INSULATED	1	FEET-L	VALVE	
88	1/2" PIPER INSULATED	1	FEET-L	VALVE	
89	1/2" PIPER INSULATED	1	FEET-L	VALVE	
90	1/2" PIPER INSULATED	1	FEET-L	VALVE	
91	1/2" PIPER INSULATED	1	FEET-L	VALVE	
92	1/2" PIPER INSULATED	1	FEET-L	VALVE	
93	1/2" PIPER INSULATED	1	FEET-L	VALVE	
94	1/2" PIPER INSULATED	1	FEET-L	VALVE	
95	1/2" PIPER INSULATED	1	FEET-L	VALVE	
96	1/2" PIPER INSULATED	1	FEET-L	VALVE	
97	1/2" PIPER INSULATED	1	FEET-L	VALVE	
98	1/2" PIPER INSULATED	1	FEET-L	VALVE	
99	1/2" PIPER INSULATED	1	FEET-L	VALVE	
100	1/2" PIPER INSULATED	1	FEET-L	VALVE	

COMPTON ELECTRONIC EQUIPMENT CO.

ITEM	DESCRIPTION	QTY	UNITS	ELECTRICAL	REMARKS
1	CONCRETE				
2	CONCRETE				
3	CONCRETE				
4	CONCRETE				
5	CONCRETE				
6	CONCRETE				
7	CONCRETE				
8	CONCRETE				
9	CONCRETE				
10	CONCRETE				
11	CONCRETE				
12	CONCRETE				
13	CONCRETE				
14	CONCRETE				
15	CONCRETE				
16	CONCRETE				
17	CONCRETE				
18	CONCRETE				
19	CONCRETE				
20	CONCRETE				
21	CONCRETE				
22	CONCRETE				
23	CONCRETE				
24	CONCRETE				
25	CONCRETE				
26	CONCRETE				
27	CONCRETE				
28	CONCRETE				
29	CONCRETE				
30	CONCRETE				
31	CONCRETE				
32	CONCRETE				
33	CONCRETE				
34	CONCRETE				
35	CONCRETE				
36	CONCRETE				
37	CONCRETE				
38	CONCRETE				
39	CONCRETE				
40	CONCRETE				
41	CONCRETE				
42	CONCRETE				
43	CONCRETE				
44	CONCRETE				
45	CONCRETE				
46	CONCRETE				
47	CONCRETE				
48	CONCRETE				
49	CONCRETE				
50	CONCRETE				
51	CONCRETE				
52	CONCRETE				
53	CONCRETE				
54	CONCRETE				
55	CONCRETE				
56	CONCRETE				
57	CONCRETE				
58	CONCRETE				
59	CONCRETE				
60	CONCRETE				
61	CONCRETE				
62	CONCRETE				
63	CONCRETE				
64	CONCRETE				
65	CONCRETE				
66	CONCRETE				
67	CONCRETE				
68	CONCRETE				
69	CONCRETE				
70	CONCRETE				
71	CONCRETE				
72	CONCRETE				
73	CONCRETE				
74	CONCRETE				
75	CONCRETE				
76	CONCRETE				
77	CONCRETE				
78	CONCRETE				
79	CONCRETE				
80	CONCRETE				
81	CONCRETE				
82	CONCRETE				
83	CONCRETE				
84	CONCRETE				
85	CONCRETE				
86	CONCRETE				
87	CONCRETE				
88	CONCRETE				
89	CONCRETE				
90	CONCRETE				
91	CONCRETE				
92	CONCRETE				
93	CONCRETE				
94	CONCRETE				
95	CONCRETE				
96	CONCRETE				
97	CONCRETE				
98	CONCRETE				
99	CONCRETE				
100	CONCRETE				

LIGHTING

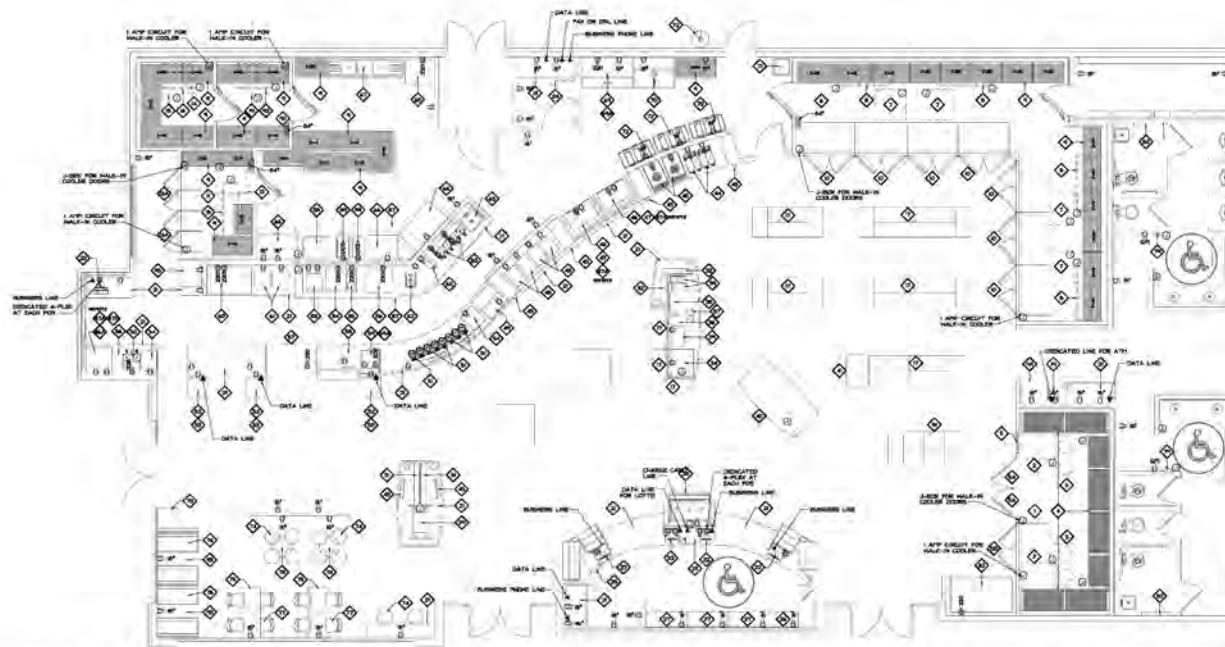
[illegible]

CEILING FINISHES	
	CEILING TO BE OPEN TO RAFTERS.
	CEILING TO BE A GYPSUM BOARD SOFFIT OR DROP CEILING. REF. PLANS FOR SIZES AND FINISHES OF SOFFIT OR DROP CEILING.
	HALK-IN CEILING A FREEZER CEILING PANELS TO BE PROVIDED BY HALK-IN COOLING MANUFACTURERS. REF. PLANS FOR HEIGHTS.
	LAY-IN DROP CEILING WITH WHITE FINISHED LAY-IN PANELS. REF. PLANS FOR SIZES, HEIGHTS, AND ORIENTATION.

NOTING NOTES:

1. ALL LIGHTS SUPPLIED AND INSTALLED BY GENERAL CONTRACTOR UNLESS NOTED OTHERWISE.
2. HVAC BY LOCAL CONTRACTOR TO BE COORDINATED WITH THIS PLAN.
3. GAS CAPACIT AND SIGHT LIGHTING TO BE DETERMINED BY OTHERS.
4. ALL EXPOSED TUBING TO BE PAINTED MATTE BLACK. EXPOSED HVAC DUCTS TO BE GALVANIZED FINISH.
5. ALL ATTORNS FOR HEIGHTS OF HEADERS, JOISTS, AND FLOOR-CONCRETE.
6. ALL ATTORNS FOR FLOOR KEY.
7. ALL ATTORNS, EXTERIORS, MAY BE, INTERFERED BY OR INTERFERED BY OTHERS.

ELECTRICAL



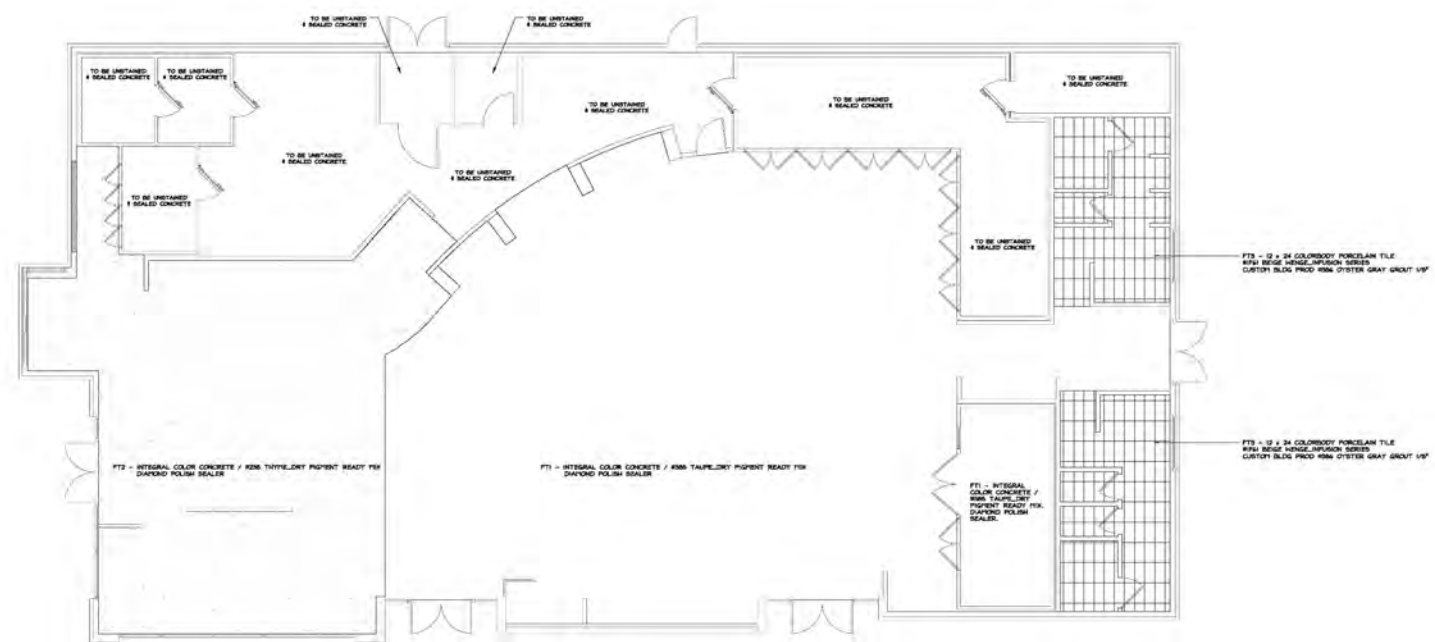
NOTE: EQUIPMENT VENDORS RESPONSIBILITY TO NOTIFY THE ELECTRICAL ENGINEER OF ANY CHANGES OR MODIFICATIONS OF THE EQUIPMENT FOR PROPER ELECTRICAL REQUIREMENTS?

[illegible][illegible][illegible]

ITEM	DESCRIPTION	QTY	PERIOD	ELECTRICAL	REMARKS
				VOLTS	AMPS
66	TABLE POWER SUPPLY CIRCUIT BOARD	4	WARRANT		
67	TABLE POWER SUPPLY CIRCUIT BOARD	1	WARRANT		
68	TABLE POWER SUPPLY CIRCUIT BOARD	1	WARRANT		
69	TABLE POWER SUPPLY CIRCUIT BOARD	1	WARRANT		
70	TABLE POWER SUPPLY CIRCUIT BOARD	1	WARRANT		
71	TABLE POWER SUPPLY CIRCUIT BOARD	1	WARRANT		
72	TABLE POWER SUPPLY CIRCUIT BOARD	1	WARRANT		
73	TABLE POWER SUPPLY CIRCUIT BOARD	1	WARRANT		
74	TABLE POWER SUPPLY CIRCUIT BOARD	1	WARRANT		
75	TABLE POWER SUPPLY CIRCUIT BOARD	1	WARRANT		
76	TABLE POWER SUPPLY CIRCUIT BOARD	1	WARRANT		
77	TABLE POWER SUPPLY CIRCUIT BOARD	1	WARRANT		
78	TABLE POWER SUPPLY CIRCUIT BOARD	1	WARRANT		
79	TABLE POWER SUPPLY CIRCUIT BOARD	1	WARRANT		
80	TABLE POWER SUPPLY CIRCUIT BOARD	1	WARRANT		
81	TABLE POWER SUPPLY CIRCUIT BOARD	1	WARRANT		
82	TABLE POWER SUPPLY CIRCUIT BOARD	1	WARRANT		
83	TABLE POWER SUPPLY CIRCUIT BOARD	1	WARRANT		
84	TABLE POWER SUPPLY CIRCUIT BOARD	1	WARRANT		
85	TABLE POWER SUPPLY CIRCUIT BOARD	1	WARRANT		
86	TABLE POWER SUPPLY CIRCUIT BOARD	1	WARRANT		
87	TABLE POWER SUPPLY CIRCUIT BOARD	1	WARRANT		
88	TABLE POWER SUPPLY CIRCUIT BOARD	1	WARRANT		
89	TABLE POWER SUPPLY CIRCUIT BOARD	1	WARRANT		
90	TABLE POWER SUPPLY CIRCUIT BOARD	1	WARRANT		
91	TABLE POWER SUPPLY CIRCUIT BOARD	1	WARRANT		
92	TABLE POWER SUPPLY CIRCUIT BOARD	1	WARRANT		
93	TABLE POWER SUPPLY CIRCUIT BOARD	1	WARRANT		
94	TABLE POWER SUPPLY CIRCUIT BOARD	1	WARRANT		
95	TABLE POWER SUPPLY CIRCUIT BOARD	1	WARRANT		
96	TABLE POWER SUPPLY CIRCUIT BOARD	1	WARRANT		
97	TABLE POWER SUPPLY CIRCUIT BOARD	1	WARRANT		
98	TABLE POWER SUPPLY CIRCUIT BOARD	1	WARRANT		
99	TABLE POWER SUPPLY CIRCUIT BOARD	1	WARRANT		
100	TABLE POWER SUPPLY CIRCUIT BOARD	1	WARRANT		

- | | |
|---|--|
| 1 | INSTALL CONTRACTOR TO PROVIDE COMPLETE INSTALLATION OF THE FOLLOWING: (1) ALL WIRING, (2) ALL CONNECTIONS, (3) ALL ELECTRICAL LISTINGS, AND RECEPTS. |
| 2 | INSTALL CONTRACTOR TO PROVIDE ALL INSTALLATIONS TO COMPLY WITH ALL CITY, STATE, AND FEDERAL REQUIREMENTS. |
| 3 | INSTALL CONTRACTOR TO PROVIDE SERVICE AS REQUESTED BY THE LOCAL ELECTRICAL. |
| 4 | INSTALL CONTRACTOR TO PLAN FOR ADDITIONAL, LOCAL REQUIREMENTS. |
| 5 | PROVIDED/LOANED TOOLS/EQUIPMENT IS REQUIRED AN IMMEDIATELY FOR THE USE AND RISK OF THE CONTRACTOR. |
| 6 | INSTALLATION CONTRACTOR TO VERIFY TO THE CITY. |
| 7 | PROVIDE A LIST OF THE CURRENT STATUS OF ALL RECEPTS TO BE INSTALLED. LABEL RECEPTS TO BE INSTALLED. IF ANY RECEPT IS NOT INSTALLED, THE CONTRACTOR MUST PROVIDE A LIST OF THE RECEPTS NOT INSTALLED. |
| 8 | PROVIDE ELECTRICAL SUPPLY IN CEILING PANELS/BOXES. |
| 9 | SEE SERVICE RECORD. |
-
- | | | | | | | | | | | | | | | | | | | | | | | | | | | | | | | | | | | | | | | | | | | | | | | | | | | | | | | | | | | | | | | | | | | | | | | | | | | | | | | | | | | | | | | | | | | | | | | | | | | | | | | | | | | | | | | | | | | | | | | | | | | | | | | | | | | | | | | | | | | | | | | | | | | | | | | | | | | | | | | | | | | | | | | | | | | | | | | | | | | | | | | | | | | | | | | | | | | | | | | | | | | | | | | | | | | | | | | | | | | | | | | | | | | | | | | | | | | | | | | | | | | | | | | | | | | | | | | | | | | | | | | | | | | | | | | | | | | | | | | | | | | | | | | | | | | | | | | | | | | | | | | | | | | | | | | | | | | | | | | | | | | | | | | | | | | | | | | | | | | | | | | | | | | | | | | | | | | | | | | | | | | | | | | | | | | | | | | | | | | | | |
|---|----|----|----|----|----|----|----|----|----|-----|-----|-----|-----|-----|-----|-----|-----|-----|-----|-----|-----|-----|-----|-----|-----|-----|-----|-----|-----|-----|-----|-----|-----|-----|-----|-----|-----|-----|-----|-----|-----|-----|-----|-----|-----|-----|-----|-----|-----|-----|-----|-----|-----|-----|-----|-----|-----|-----|-----|-----|-----|-----|-----|-----|-----|-----|-----|-----|-----|-----|-----|-----|-----|-----|-----|-----|-----|-----|-----|-----|-----|-----|-----|-----|-----|-----|-----|-----|-----|-----|-----|-----|-----|-----|-----|-----|-----|-----|-----|------|------|------|------|------|------|------|------|------|------|------|------|------|------|------|------|------|------|------|------|------|------|------|------|------|------|------|------|------|------|------|------|------|------|------|------|------|------|------|------|------|------|------|------|------|------|------|------|------|------|------|------|------|------|------|------|------|------|------|------|------|------|------|------|------|------|------|------|------|------|------|------|------|------|------|------|------|------|------|------|------|------|------|------|------|------|------|------|------|------|------|------|------|------|------|------|------|------|------|------|------|------|------|------|------|------|------|------|------|------|------|------|------|------|------|------|------|------|------|------|------|------|------|------|------|------|------|------|------|------|------|------|------|------|------|------|------|------|------|------|------|------|------|------|------|------|------|------|------|------|------|------|------|------|------|------|------|------|------|------|------|------|------|------|------|------|------|------|------|------|------|------|------|------|------|------|------|------|------|------|------|------|------|------|------|------|------|------|------|------|------|------|------|------|------|------|------|------|------|------|------|------|------|------|------|------|------|------|------|------|------|------|------|------|------|------|------|------|------|------|------|------|------|------|------|------|------|------|------|------|------|------|------|------|------|------|------|------|------|------|------|------|------|------|------|------|------|------|------|------|------|------|------|------|------|------|------|------|------|------|------|------|------|------|------|------|------|------|------|------|------|------|------|------|------|------|------|------|------|------|------|
| Q | Q1 | Q2 | Q3 | Q4 | Q5 | Q6 | Q7 | Q8 | Q9 | Q10 | Q11 | Q12 | Q13 | Q14 | Q15 | Q16 | Q17 | Q18 | Q19 | Q20 | Q21 | Q22 | Q23 | Q24 | Q25 | Q26 | Q27 | Q28 | Q29 | Q30 | Q31 | Q32 | Q33 | Q34 | Q35 | Q36 | Q37 | Q38 | Q39 | Q40 | Q41 | Q42 | Q43 | Q44 | Q45 | Q46 | Q47 | Q48 | Q49 | Q50 | Q51 | Q52 | Q53 | Q54 | Q55 | Q56 | Q57 | Q58 | Q59 | Q60 | Q61 | Q62 | Q63 | Q64 | Q65 | Q66 | Q67 | Q68 | Q69 | Q70 | Q71 | Q72 | Q73 | Q74 | Q75 | Q76 | Q77 | Q78 | Q79 | Q80 | Q81 | Q82 | Q83 | Q84 | Q85 | Q86 | Q87 | Q88 | Q89 | Q90 | Q91 | Q92 | Q93 | Q94 | Q95 | Q96 | Q97 | Q98 | Q99 | Q100 | Q101 | Q102 | Q103 | Q104 | Q105 | Q106 | Q107 | Q108 | Q109 | Q110 | Q111 | Q112 | Q113 | Q114 | Q115 | Q116 | Q117 | Q118 | Q119 | Q120 | Q121 | Q122 | Q123 | Q124 | Q125 | Q126 | Q127 | Q128 | Q129 | Q130 | Q131 | Q132 | Q133 | Q134 | Q135 | Q136 | Q137 | Q138 | Q139 | Q140 | Q141 | Q142 | Q143 | Q144 | Q145 | Q146 | Q147 | Q148 | Q149 | Q150 | Q151 | Q152 | Q153 | Q154 | Q155 | Q156 | Q157 | Q158 | Q159 | Q160 | Q161 | Q162 | Q163 | Q164 | Q165 | Q166 | Q167 | Q168 | Q169 | Q170 | Q171 | Q172 | Q173 | Q174 | Q175 | Q176 | Q177 | Q178 | Q179 | Q180 | Q181 | Q182 | Q183 | Q184 | Q185 | Q186 | Q187 | Q188 | Q189 | Q190 | Q191 | Q192 | Q193 | Q194 | Q195 | Q196 | Q197 | Q198 | Q199 | Q200 | Q201 | Q202 | Q203 | Q204 | Q205 | Q206 | Q207 | Q208 | Q209 | Q210 | Q211 | Q212 | Q213 | Q214 | Q215 | Q216 | Q217 | Q218 | Q219 | Q220 | Q221 | Q222 | Q223 | Q224 | Q225 | Q226 | Q227 | Q228 | Q229 | Q230 | Q231 | Q232 | Q233 | Q234 | Q235 | Q236 | Q237 | Q238 | Q239 | Q240 | Q241 | Q242 | Q243 | Q244 | Q245 | Q246 | Q247 | Q248 | Q249 | Q250 | Q251 | Q252 | Q253 | Q254 | Q255 | Q256 | Q257 | Q258 | Q259 | Q260 | Q261 | Q262 | Q263 | Q264 | Q265 | Q266 | Q267 | Q268 | Q269 | Q270 | Q271 | Q272 | Q273 | Q274 | Q275 | Q276 | Q277 | Q278 | Q279 | Q280 | Q281 | Q282 | Q283 | Q284 | Q285 | Q286 | Q287 | Q288 | Q289 | Q290 | Q291 | Q292 | Q293 | Q294 | Q295 | Q296 | Q297 | Q298 | Q299 | Q300 | Q301 | Q302 | Q303 | Q304 | Q305 | Q306 | Q307 | Q308 | Q309 | Q310 | Q311 | Q312 | Q313 | Q314 | Q315 | Q316 | Q317 | Q318 | Q319 | Q320 | Q321 | Q322 | Q323 | Q324 | Q325 | Q326 | Q327 | Q328 | Q329 | Q330 | Q331 | Q332 | Q333 | Q334 | Q335 | Q336 | Q337 | Q338 | Q339 | Q340 | Q341 | Q342 | Q343 | Q344 | Q345 | Q346 | Q347 | Q348 | Q349 | Q350 | Q351 | Q352 | Q353 | Q354 | Q355 | Q356 | Q357 | Q358 | Q359 | Q360 | Q361 | Q362 | Q363 | Q364 | Q365 | Q366 | Q367 | Q368 | Q369 | Q370 | Q371 | Q372 | Q373 | Q374 | Q375 | Q376 | Q377 | Q378 | Q379 | Q380 |
|---|----|----|----|----|----|----|----|----|----|-----|-----|-----|-----|-----|-----|-----|-----|-----|-----|-----|-----|-----|-----|-----|-----|-----|-----|-----|-----|-----|-----|-----|-----|-----|-----|-----|-----|-----|-----|-----|-----|-----|-----|-----|-----|-----|-----|-----|-----|-----|-----|-----|-----|-----|-----|-----|-----|-----|-----|-----|-----|-----|-----|-----|-----|-----|-----|-----|-----|-----|-----|-----|-----|-----|-----|-----|-----|-----|-----|-----|-----|-----|-----|-----|-----|-----|-----|-----|-----|-----|-----|-----|-----|-----|-----|-----|-----|-----|-----|------|------|------|------|------|------|------|------|------|------|------|------|------|------|------|------|------|------|------|------|------|------|------|------|------|------|------|------|------|------|------|------|------|------|------|------|------|------|------|------|------|------|------|------|------|------|------|------|------|------|------|------|------|------|------|------|------|------|------|------|------|------|------|------|------|------|------|------|------|------|------|------|------|------|------|------|------|------|------|------|------|------|------|------|------|------|------|------|------|------|------|------|------|------|------|------|------|------|------|------|------|------|------|------|------|------|------|------|------|------|------|------|------|------|------|------|------|------|------|------|------|------|------|------|------|------|------|------|------|------|------|------|------|------|------|------|------|------|------|------|------|------|------|------|------|------|------|------|------|------|------|------|------|------|------|------|------|------|------|------|------|------|------|------|------|------|------|------|------|------|------|------|------|------|------|------|------|------|------|------|------|------|------|------|------|------|------|------|------|------|------|------|------|------|------|------|------|------|------|------|------|------|------|------|------|------|------|------|------|------|------|------|------|------|------|------|------|------|------|------|------|------|------|------|------|------|------|------|------|------|------|------|------|------|------|------|------|------|------|------|------|------|------|------|------|------|------|------|------|------|------|------|------|------|------|------|------|------|------|------|------|------|------|------|------|------|------|------|------|------|------|------|------|------|------|------|------|------|------|------|------|

FLOORING



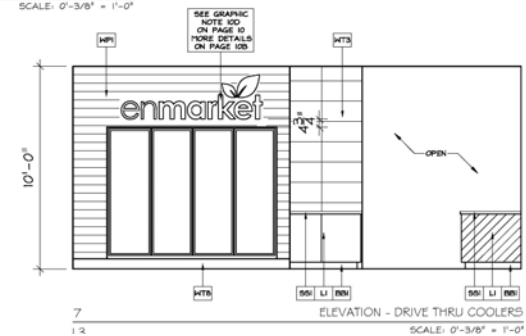
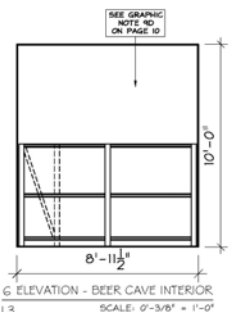
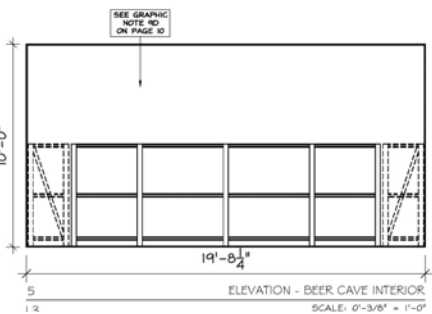
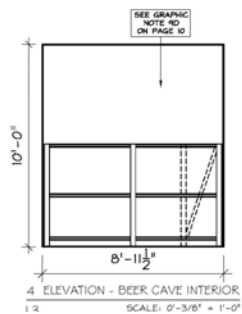
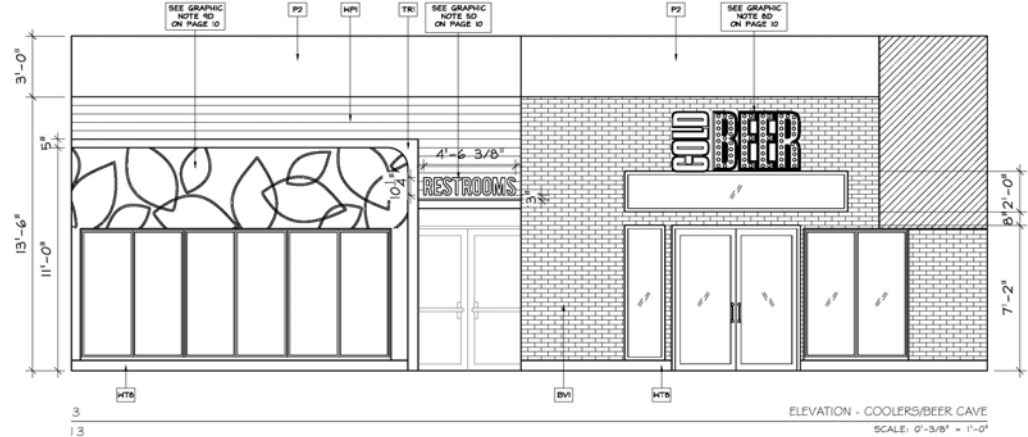
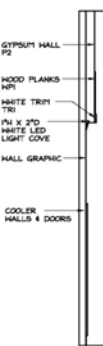
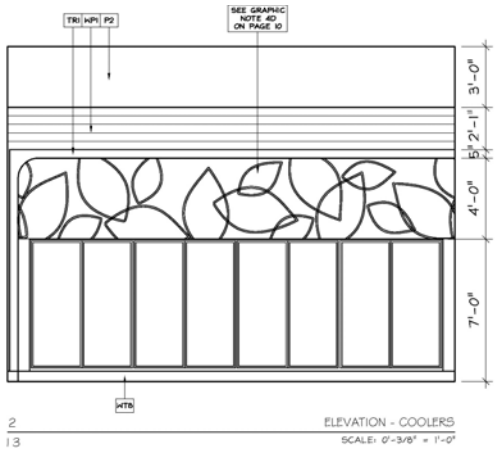
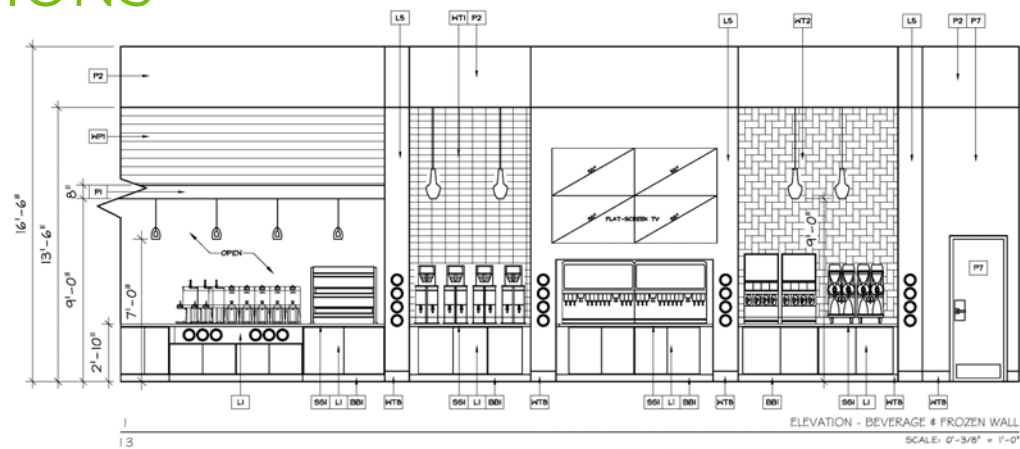
LOOK / FINISHES	
T-COVERS	- TILES USED ON FLOORS. WALL TILES MAY BE FOUND ON INTERIOR ELEVATIONS
FLOOR TILE FIELD A:	
PT1	- INTEGRAL COLOR CONCRETE / RRM THINLITE DRY POWDER READY FOR DIAMOND POLISH SEALER BY RAUPER COLOR - CONTACT BSA/BAH/ST
FLOOR TILE FIELD B:	
PT2	- INTEGRAL COLOR CONCRETE / RRM THINLITE DRY POWDER READY FOR DIAMOND POLISH SEALER BY RAUPER COLOR - CONTACT BSA/BAH/ST
FLOOR TILE FIELD C:	
PT3	- 12" x 24" COLORBODY PORCELAIN TILE / RRM BEIGE HEDGE, IMPERON SERIES CUSTOM BLUE PRIMO RRM OYSTER GRAY GRANT VHF BY ARTERIAL COLOR (FORM 301) - CONTACT DON SAUTERNAK DDP ARAGON/STH
SEE 18715 TILE TO RRM COFFERHOLD UNDER COFFERS	

SCHEDULES

INTERIOR FINISH SCHEDULE			
CODE	DESCRIPTION	COLOR	MANUFACTURER CONTACT
P1	EGGSHELL FINISH INTERIOR LATEX PAINT PAINT MIX TBD BY SUBSTRATE	#SW4117 LIME ROCKET	SHERWIN WILLIAMS
P2	EGGSHELL FINISH INTERIOR LATEX PAINT PAINT MIX TBD BY SUBSTRATE	#SW7005 PURE WHITE	SHERWIN WILLIAMS
P3	EGGSHELL FINISH INTERIOR LATEX PAINT PAINT MIX TBD BY SUBSTRATE	#SW4407S REALIST BEIGE	SHERWIN WILLIAMS
P5	EGGSHELL FINISH INTERIOR LATEX PAINT PAINT MIX TBD BY SUBSTRATE	#SW4487 NAVEL	SHERWIN WILLIAMS
P7	EGGSHELL FINISH INTERIOR LATEX PAINT PAINT MIX TBD BY SUBSTRATE	#SW7051 BALANCED BEIGE	SHERWIN WILLIAMS
DB1	1/2" SOLID SURFACING	COLOR: 306 CREME GRANITI COLLECTION: SIGNATURES	FORMICA 800.FORMICA
Q1	QUARTZ COUNTERTOPS (USE WHERE PREFERRED BY CLIENTS)	COLOR: CYGNUS PEARL	ZODIAC 877.224.3485
L1	PLASTIC LAMINATE SOFT GRAB FINISH	#TN56-12 HALLUT HEIGHTS	WILSONART 800.433.3222
L2	PLASTIC LAMINATE MATTE FINISH	#P057-58 GLOM MAPLE	FORMICA 800.FORMICA
L3	PLASTIC LAMINATE LINEARITY FINISH	#D4NK-18 ISLAND	WILSONART 800.433.3222
SH1	3" SLATHALL WITH LAMINATE INSERTS	FACE OF SLATHALL TO BE (BLACK) INSERTS OF SLATHALL TO BE (BLACK)	MANUTE DISPLAYALL 800.377.0201
TR1	5/8" X 1/2" THICK MOOD PAINTED TRIM	PAINTED W/ P2 (PURE WHITE)	LOCAL SUPPLIER BY GENERAL CONTRACTOR
WP1	3/4" X 8" SOLID MOOD PLANKS	COLOR: TBD (SELECTION IN PROGRESS) W/ MICRO BEVEL EDGE	777 777
BR1	BRICK VENEER FLATS & CORNERS 1/2" X 3 1/4" X 7 5/8"	CARRIAGEHOUSE	GENERAL SHALE 800.444.4646
CR1	SQUARE FULL (CABINET) DPNR SERIES	#D9H0K/3 - SATIN STAINLESS STEEL IS 3/8" X 17 5/8" O.C. 3 1/2" X 21 1/2" X 14 1/2" O.C.	ROCKETT 800.523.2841
V1	54" VINYL SEATING	COLOR: CLASH LIFE / SERIES: CLEAH SLATE	CF STENOON 800.644.6274
V2	54" VINYL SEATING BOOTH BACKS	COLOR: L27 BLAZER / SERIES: LAKEDO	CF STENOON 800.644.6274
V3	54" VINYL SEATING BOOTH SEATS	COLOR: AYS08 PEXTER / SERIES: AVANT	CF STENOON 800.644.6274
HT1	4 X 8 GLAZED CERAMIC TILE HALL TILE	#WFI ELEVENTH HOUR COLOR BY NUMBERS SER. LATICRETE 888 BRIGHT WHITE GROUT (1/8" LINES)	CHORDVILLE CERAMIC JAIME RUTING 264.394.4446
HT2	3 X 6 GLAZED CERAMIC TILE HALL TILE - HERRINGBONE PATTERN	#WFI ICE WHITE BRITE PROFILES LATICRETE 888 RAVEN GROUT	AMERICAN CLEAH (THRU BPI) LAWRENCE COLE 502.444.8880
HT3	12 X 24 COLORBODY PORCELAIN TILE HALL TILE	#WFI CREST (LIGHT POLISHED) SCENE SERIES LATICRETE 888 DESERT SAND GROUT	AMERICAN CLEAH (THRU BPI) ERIN GAUTREAUX GUY 464.260.5474
HT4	3/8" X RANDOM METAL & GLASS MOSAIC TILE HALL/DECORATIVE TILE	#WFI4 ARSENAL/PORCELLO SERIES LATICRETE 888 BRIGHT WHITE GROUT	AMERICAN CLEAH (THRU BPI) ERIN GAUTREAUX GUY 464.260.5474
HT5	12 X 24 COLORBODY PORCELAIN TILE HALL TILE	#WFI2 TALPE HEDGE INFUSION SERIES CUSTOM BLDG PROD #WFI LIGHT SMOKE GROUT 1/8"	AMERICAN CLEAH (THRU BPI) ERIN GAUTREAUX GUY 464.260.5474
HT6	12 X 24 COLORBODY PORCELAIN TILE HALL TILE	#WFI4 BEIGE HEDGE INFUSION SERIES CUSTOM BLDG PROD #WFI OYSTER GRAY GROUT 1/8"	AMERICAN CLEAH (THRU BPI) ERIN GAUTREAUX GUY 464.260.5474
HT7	36" LUTER SYSTEMS EDGE PROFILES USE APPLICATIONS WHERE NECESSARY	FINISH: SATIN ANODIZED ALUMINUM - DESIGNLINE (7" X 1/4" PROFILE) - BONDCE (1/4" RADIUS)	SCHLUTER SYSTEMS 800.472.4588
HT8	6 X 12 COLORBODY PORCELAIN TILE COVE BASE TILE	#WFI05 FANGO PORTFOLIO SERIES LATICRETE 888 MOCHA GROUT 1/8"	DALTILE KELLY RYAN (KELLY.RYAN@DALTL.COM)
HT9	6 X 12 COLORBODY PORCELAIN TILE COVE BASE TILE	#WFI08 CHOCOLATE PORTFOLIO SERIES LATICRETE 888 MOCHA GROUT 1/8"	DALTILE KELLY RYAN (KELLY.RYAN@DALTL.COM)
BN1	4" VINYL HALL BASE	BLACK	JXRHONITE (OR EQUAL)
PI1	80" X 40" HALL POINTED VANITY FINISH LED MARISSA6 COMMERCIAL GRADE		FINNBERG AND MARBLE INC.
PI2	24" X 36" HALL POINTED VANITY FINISH LED MARISSA6 COMMERCIAL GRADE		FINNBERG AND MARBLE INC.
INTERIOR GENERAL NOTES			
1.) ROUTE ALL ELECTRICAL COMPONENTS TO DECORATIVE LIGHTING OUT OF CUSTOMER'S VIEW.			
2.) USE CLEAR PLUGGLASS HALL CORNER GUARDS IN ALL HIGH-TRAFFIC AREAS.			
3.) USE ALUMINUM KICK PLATES ON BOTH THE INSIDE AND OUTSIDE OF REST ROOM DOORS.			
4.) ALL FIXTURES ON DOORS TO BE BRUSHED ALUMINUM UNLESS OTHERWISE SPECIFIED.			
5.) MAIN SALES CABINET TO BE FINISHED IN (L1) ON EMPLOYEE SERVICE SIDE AND SUPPORT AREAS.			
6.) RESTROOM WALLS TO BE REINFORCED WITH GREEN BOARD DOWND HALL FINISHES.			
7.) COLOUR DOORS TO BE FACTORY FINISH BLACK FRAMES.			
8.) SALES FLOOR GONDOLAS TO BE FACTORY FINISHED BLACK.			
9.) ALL TILE GROUT TO HAVE CLEAR SEALANT.			
10.) ALLOW 4-6 WEEKS (MINIMUM) LEAD TIME FOR ORDERING.			

GRAPHIC DETAIL NOTES	
CODE	DESCRIPTION - REFER TO INTERIOR RENDERINGS FOR OVERALL GRAPHIC APPEARANCE. CONTACT PARAGON FOR ORIGINAL ARTWORK.
1D	FORNIX GRAPHIC OPTION #1: DIGITAL PRINT VINYL GRAPHIC APPLIED DIRECTLY TO WALL. OPTION #2: PORES BOITED FROM 3M'S SHIRAZ PAINT TO MATCH SPECIFIED. SEE PAGE 10B FOR MATERIALS AND DIMENSIONS. MOUNTS TO PAINTED WALL.
2D	*"THE EATER" SIGN: ILLUMINATED GRAPHIC. SEE MATERIALS AND DIMENSIONS ON PAGE 10B. SEE LOGO SPECS FOR COLORS.
3D	"EMMARKET" LOGO DRIVE-THRU SIGN: SEE PAGE 10B FOR MATERIALS AND DIMENSIONS. MOUNTS TO WALL.
4D	LEAF PATTERN GRAPHIC: DIGITAL PRINTED VINYL GRAPHIC WITH MATTE FINISH. APPLIED TO PREPARED WALL.
5D	"RESTROOMS" LETTERS: 1/2" WHITE SHIRAZ. MOUNTS TO WALL.
6D	ROUND RESTROOMS SIGNS: 6"PM BLACK SHIRAZ WITH BRUSHED ALUMINUM FACE AND DIRECT PRINT OR VINYL GRAPHICS. MOUNTS TO WALL.
7D	"CRAFT YOUR OWN" LETTERS: SEE PAGE 10B FOR MATERIALS, COLORS AND DIMENSIONS. MOUNTS TO WALL.
8D	"COLD BEER" SIGN: SEE PAGE 10B FOR MATERIALS AND DIMENSIONS. MOUNTS TO WALL.
9D	BEER CAVE INTERIOR GRAPHIC: DIGITAL PRINTED VINYL GRAPHIC WITH MATTE FINISH. APPLIED TO PREPARED WALL.
GRAPHIC GENERAL NOTES	
1.) DETERMINE ALL GRAPHIC APPLICATIONS BY USING FIELD DIMENSIONS ONLY.	
2.) NO GRAPHIC SUBSTITUTIONS ARE ALLOWED WITHOUT PARAGON SOLUTIONS OR OWNERS CONSENT.	
3.) REVIEW ALL FINAL PRODUCTION DRAWINGS WITH PARAGON SOLUTIONS PRIOR TO PRODUCTION.	
4.) PROVIDE INSTALLATION COSTS UNLESS OTHERWISE NOTED.	

ELEVATIONS

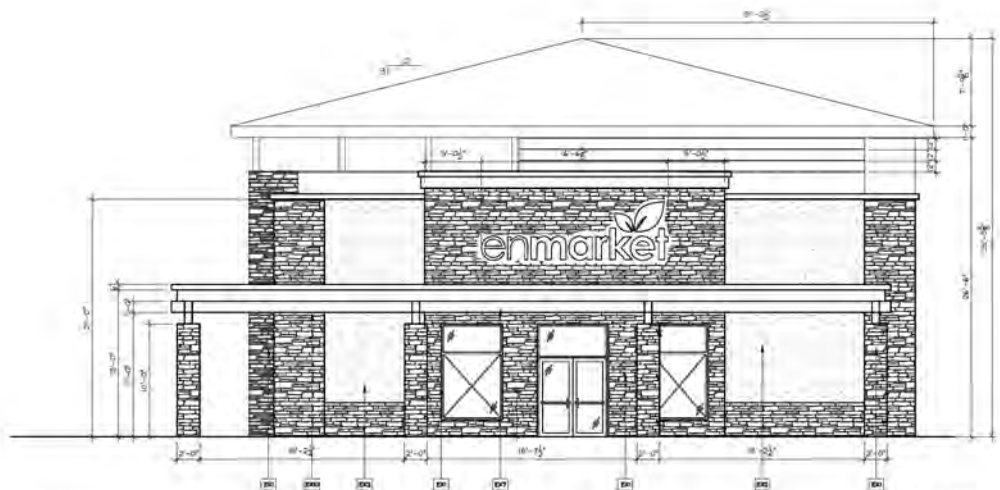


ELEVATIONS



ELEVATION - FRONT

SCALE: 3/8" = 1'-0"



ELEVATION - SIDE

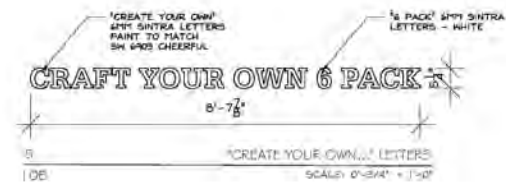
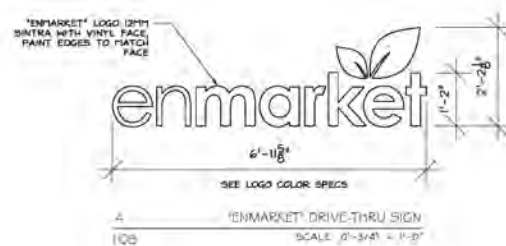
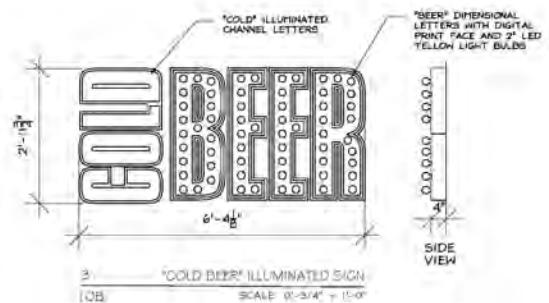
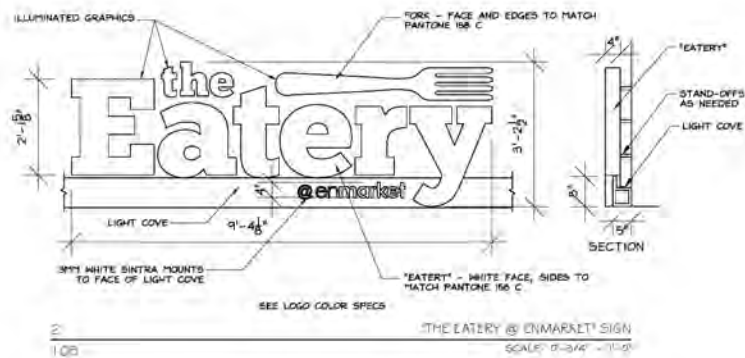
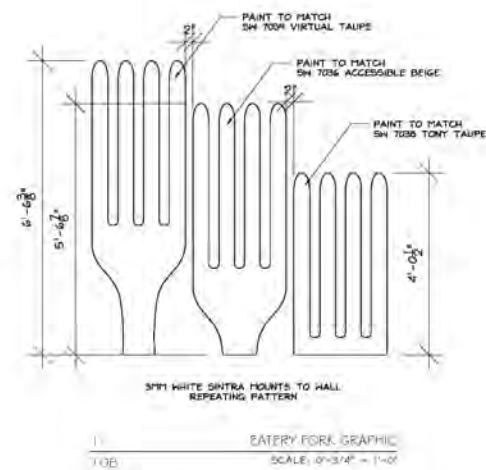
SCALE: 3/8" = 1'-0"

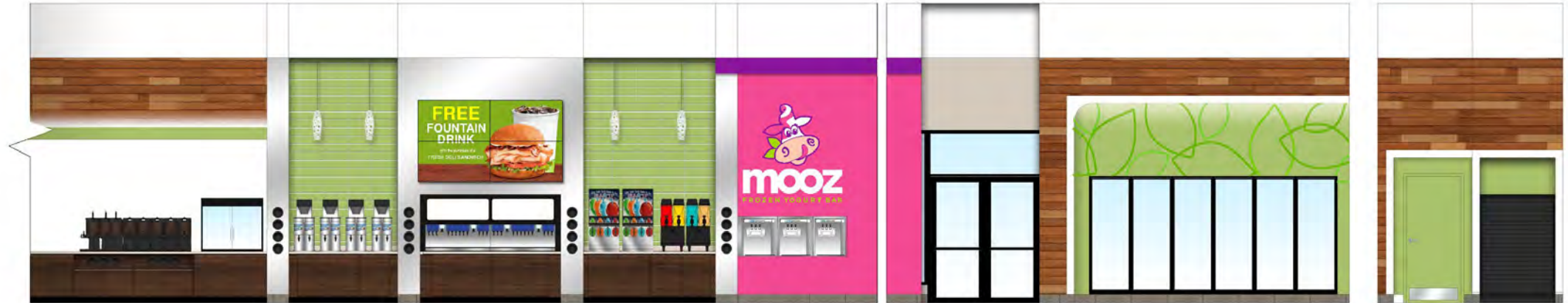
EXTERIOR FINISH SCHEDULE			
CODE	DESCRIPTION	COLOR	MANUFACTURER CONTACT
EX1	EXTERIOR STONE	SOUTHWEST FINISH	CULTURED STONE BY BORAL
EX2	EXTERIOR EPS	SAVOIRELLE FINE FINISH	ENVIAT
EX3	EXTERIOR WALL PANEL SYSTEM	10H 1048 HORIZALLY GRAY	SHERWIN WILLIAMS
EX4	EXTERIOR METAL ACCENTS	10 RADIOR-725	LONGBOARD SUPPLIES
EX5	EXTERIOR GREEN ANKING	SAVOIRELLE FINE FINISH	BY GENERAL CONTRACTOR
EX6	EXTERIOR GREEN ANKING	10H 498 BLACK PLAGIC	SHERWIN WILLIAMS
EX7	EXTERIOR GREEN ANKING	SMOOTH FINISH DESIGN BY OTHERS	BY GENERAL CONTRACTOR
EX8	EXTERIOR GREEN ANKING	10H 477 LITE ROCKY	SHERWIN WILLIAMS
EX9	EXTERIOR GREEN ANKING	10H 477 LITE ROCKY	SHERWIN WILLIAMS
EX10	EXTERIOR GREEN ANKING	10H 477 LITE ROCKY	SHERWIN WILLIAMS
EX11	EXTERIOR GREEN ANKING	10H 477 LITE ROCKY	SHERWIN WILLIAMS
EX12	EXTERIOR GREEN ANKING	10H 477 LITE ROCKY	SHERWIN WILLIAMS
EX13	EXTERIOR GREEN ANKING	10H 477 LITE ROCKY	SHERWIN WILLIAMS
EX14	EXTERIOR GREEN ANKING	10H 477 LITE ROCKY	SHERWIN WILLIAMS
EX15	EXTERIOR GREEN ANKING	10H 477 LITE ROCKY	SHERWIN WILLIAMS
EX16	EXTERIOR GREEN ANKING	10H 477 LITE ROCKY	SHERWIN WILLIAMS
EX17	EXTERIOR GREEN ANKING	10H 477 LITE ROCKY	SHERWIN WILLIAMS
EX18	EXTERIOR GREEN ANKING	10H 477 LITE ROCKY	SHERWIN WILLIAMS
EX19	EXTERIOR GREEN ANKING	10H 477 LITE ROCKY	SHERWIN WILLIAMS
EX20	EXTERIOR GREEN ANKING	10H 477 LITE ROCKY	SHERWIN WILLIAMS
EX21	EXTERIOR GREEN ANKING	10H 477 LITE ROCKY	SHERWIN WILLIAMS
EX22	EXTERIOR GREEN ANKING	10H 477 LITE ROCKY	SHERWIN WILLIAMS
EX23	EXTERIOR GREEN ANKING	10H 477 LITE ROCKY	SHERWIN WILLIAMS
EX24	EXTERIOR GREEN ANKING	10H 477 LITE ROCKY	SHERWIN WILLIAMS
EX25	EXTERIOR GREEN ANKING	10H 477 LITE ROCKY	SHERWIN WILLIAMS
EX26	EXTERIOR GREEN ANKING	10H 477 LITE ROCKY	SHERWIN WILLIAMS
EX27	EXTERIOR GREEN ANKING	10H 477 LITE ROCKY	SHERWIN WILLIAMS
EX28	EXTERIOR GREEN ANKING	10H 477 LITE ROCKY	SHERWIN WILLIAMS
EX29	EXTERIOR GREEN ANKING	10H 477 LITE ROCKY	SHERWIN WILLIAMS
EX30	EXTERIOR GREEN ANKING	10H 477 LITE ROCKY	SHERWIN WILLIAMS
EX31	EXTERIOR GREEN ANKING	10H 477 LITE ROCKY	SHERWIN WILLIAMS
EX32	EXTERIOR GREEN ANKING	10H 477 LITE ROCKY	SHERWIN WILLIAMS
EX33	EXTERIOR GREEN ANKING	10H 477 LITE ROCKY	SHERWIN WILLIAMS
EX34	EXTERIOR GREEN ANKING	10H 477 LITE ROCKY	SHERWIN WILLIAMS
EX35	EXTERIOR GREEN ANKING	10H 477 LITE ROCKY	SHERWIN WILLIAMS
EX36	EXTERIOR GREEN ANKING	10H 477 LITE ROCKY	SHERWIN WILLIAMS
EX37	EXTERIOR GREEN ANKING	10H 477 LITE ROCKY	SHERWIN WILLIAMS
EX38	EXTERIOR GREEN ANKING	10H 477 LITE ROCKY	SHERWIN WILLIAMS
EX39	EXTERIOR GREEN ANKING	10H 477 LITE ROCKY	SHERWIN WILLIAMS
EX40	EXTERIOR GREEN ANKING	10H 477 LITE ROCKY	SHERWIN WILLIAMS
EX41	EXTERIOR GREEN ANKING	10H 477 LITE ROCKY	SHERWIN WILLIAMS
EX42	EXTERIOR GREEN ANKING	10H 477 LITE ROCKY	SHERWIN WILLIAMS
EX43	EXTERIOR GREEN ANKING	10H 477 LITE ROCKY	SHERWIN WILLIAMS
EX44	EXTERIOR GREEN ANKING	10H 477 LITE ROCKY	SHERWIN WILLIAMS
EX45	EXTERIOR GREEN ANKING	10H 477 LITE ROCKY	SHERWIN WILLIAMS
EX46	EXTERIOR GREEN ANKING	10H 477 LITE ROCKY	SHERWIN WILLIAMS
EX47	EXTERIOR GREEN ANKING	10H 477 LITE ROCKY	SHERWIN WILLIAMS
EX48	EXTERIOR GREEN ANKING	10H 477 LITE ROCKY	SHERWIN WILLIAMS
EX49	EXTERIOR GREEN ANKING	10H 477 LITE ROCKY	SHERWIN WILLIAMS
EX50	EXTERIOR GREEN ANKING	10H 477 LITE ROCKY	SHERWIN WILLIAMS
EX51	EXTERIOR GREEN ANKING	10H 477 LITE ROCKY	SHERWIN WILLIAMS
EX52	EXTERIOR GREEN ANKING	10H 477 LITE ROCKY	SHERWIN WILLIAMS
EX53	EXTERIOR GREEN ANKING	10H 477 LITE ROCKY	SHERWIN WILLIAMS
EX54	EXTERIOR GREEN ANKING	10H 477 LITE ROCKY	SHERWIN WILLIAMS
EX55	EXTERIOR GREEN ANKING	10H 477 LITE ROCKY	SHERWIN WILLIAMS
EX56	EXTERIOR GREEN ANKING	10H 477 LITE ROCKY	SHERWIN WILLIAMS
EX57	EXTERIOR GREEN ANKING	10H 477 LITE ROCKY	SHERWIN WILLIAMS
EX58	EXTERIOR GREEN ANKING	10H 477 LITE ROCKY	SHERWIN WILLIAMS
EX59	EXTERIOR GREEN ANKING	10H 477 LITE ROCKY	SHERWIN WILLIAMS
EX60	EXTERIOR GREEN ANKING	10H 477 LITE ROCKY	SHERWIN WILLIAMS
EX61	EXTERIOR GREEN ANKING	10H 477 LITE ROCKY	SHERWIN WILLIAMS
EX62	EXTERIOR GREEN ANKING	10H 477 LITE ROCKY	SHERWIN WILLIAMS
EX63	EXTERIOR GREEN ANKING	10H 477 LITE ROCKY	SHERWIN WILLIAMS
EX64	EXTERIOR GREEN ANKING	10H 477 LITE ROCKY	SHERWIN WILLIAMS
EX65	EXTERIOR GREEN ANKING	10H 477 LITE ROCKY	SHERWIN WILLIAMS
EX66	EXTERIOR GREEN ANKING	10H 477 LITE ROCKY	SHERWIN WILLIAMS
EX67	EXTERIOR GREEN ANKING	10H 477 LITE ROCKY	SHERWIN WILLIAMS
EX68	EXTERIOR GREEN ANKING	10H 477 LITE ROCKY	SHERWIN WILLIAMS
EX69	EXTERIOR GREEN ANKING	10H 477 LITE ROCKY	SHERWIN WILLIAMS
EX70	EXTERIOR GREEN ANKING	10H 477 LITE ROCKY	SHERWIN WILLIAMS
EX71	EXTERIOR GREEN ANKING	10H 477 LITE ROCKY	SHERWIN WILLIAMS
EX72	EXTERIOR GREEN ANKING	10H 477 LITE ROCKY	SHERWIN WILLIAMS
EX73	EXTERIOR GREEN ANKING	10H 477 LITE ROCKY	SHERWIN WILLIAMS
EX74	EXTERIOR GREEN ANKING	10H 477 LITE ROCKY	SHERWIN WILLIAMS
EX75	EXTERIOR GREEN ANKING	10H 477 LITE ROCKY	SHERWIN WILLIAMS
EX76	EXTERIOR GREEN ANKING	10H 477 LITE ROCKY	SHERWIN WILLIAMS
EX77	EXTERIOR GREEN ANKING	10H 477 LITE ROCKY	SHERWIN WILLIAMS
EX78	EXTERIOR GREEN ANKING	10H 477 LITE ROCKY	SHERWIN WILLIAMS
EX79	EXTERIOR GREEN ANKING	10H 477 LITE ROCKY	SHERWIN WILLIAMS
EX80	EXTERIOR GREEN ANKING	10H 477 LITE ROCKY	SHERWIN WILLIAMS
EX81	EXTERIOR GREEN ANKING	10H 477 LITE ROCKY	SHERWIN WILLIAMS
EX82	EXTERIOR GREEN ANKING	10H 477 LITE ROCKY	SHERWIN WILLIAMS
EX83	EXTERIOR GREEN ANKING	10H 477 LITE ROCKY	SHERWIN WILLIAMS
EX84	EXTERIOR GREEN ANKING	10H 477 LITE ROCKY	SHERWIN WILLIAMS
EX85	EXTERIOR GREEN ANKING	10H 477 LITE ROCKY	SHERWIN WILLIAMS
EX86	EXTERIOR GREEN ANKING	10H 477 LITE ROCKY	SHERWIN WILLIAMS
EX87	EXTERIOR GREEN ANKING	10H 477 LITE ROCKY	SHERWIN WILLIAMS
EX88	EXTERIOR GREEN ANKING	10H 477 LITE ROCKY	SHERWIN WILLIAMS
EX89	EXTERIOR GREEN ANKING	10H 477 LITE ROCKY	SHERWIN WILLIAMS
EX90	EXTERIOR GREEN ANKING	10H 477 LITE ROCKY	SHERWIN WILLIAMS
EX91	EXTERIOR GREEN ANKING	10H 477 LITE ROCKY	SHERWIN WILLIAMS
EX92	EXTERIOR GREEN ANKING	10H 477 LITE ROCKY	SHERWIN WILLIAMS
EX93	EXTERIOR GREEN ANKING	10H 477 LITE ROCKY	SHERWIN WILLIAMS
EX94	EXTERIOR GREEN ANKING	10H 477 LITE ROCKY	SHERWIN WILLIAMS
EX95	EXTERIOR GREEN ANKING	10H 477 LITE ROCKY	SHERWIN WILLIAMS
EX96	EXTERIOR GREEN ANKING	10H 477 LITE ROCKY	SHERWIN WILLIAMS
EX97	EXTERIOR GREEN ANKING	10H 477 LITE ROCKY	SHERWIN WILLIAMS
EX98	EXTERIOR GREEN ANKING	10H 477 LITE ROCKY	SHERWIN WILLIAMS
EX99	EXTERIOR GREEN ANKING	10H 477 LITE ROCKY	SHERWIN WILLIAMS
EX100	EXTERIOR GREEN ANKING	10H 477 LITE ROCKY	SHERWIN WILLIAMS

EXTERIOR GENERAL NOTE:

- 1.) CONSULT LOCAL CONTRACTOR FOR STANDARD MATERIALS.
- 2.) CONSULT PARAGON SOLUTIONS FOR COLOR VERIFICATION AND GRAPHICS.
- 3.) MATERIALS THAT NOT BE SUBSTITUTED WITHOUT PERMISSION FROM OWNER OR PARAGON SOLUTIONS.
- 4.) GENERAL CONTRACTOR TO FIELD VERIFY ALL COLORS PRIOR TO CONSTRUCTION OR APPLICATION AND PROVIDE SAMPLES TO OWNER FOR REVIEW.

DETAILS





COFFEE

TEA

FOUNTAIN

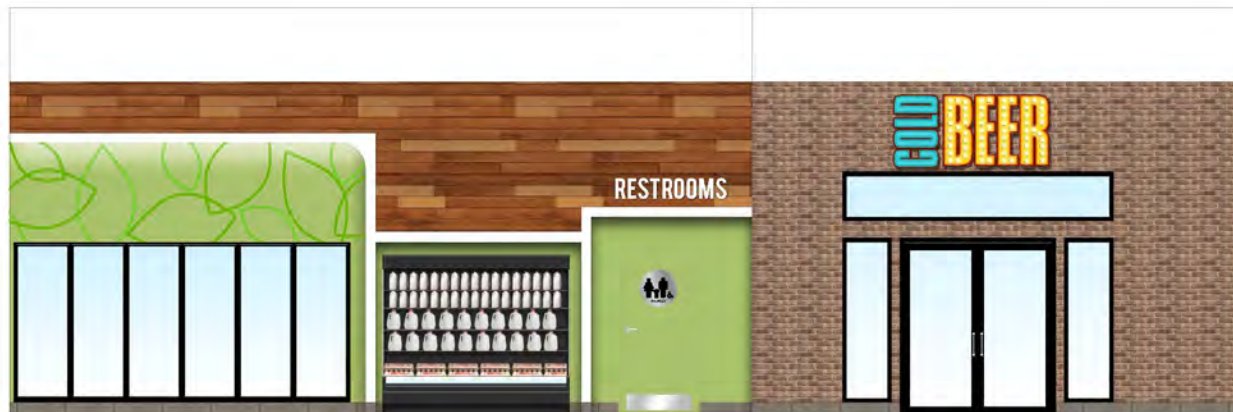
FROZEN BEV.

FROZEN YOGURT

ENTRANCE

COOLER

ENTRY HALL



COOLER

DAIRY CASE

RESTROOMS

BEER CAVE



BEER CAVE INTERIOR







design done right

© 2020 Paragon Solutions













RESTROOM

CREATE YOUR OWN 6 PACK

COLD BEER

PALE ALE by MICHAEL'S

6 PACKS
COORS
BUSCH
CORONA

the Eatery



- COFFEE
- AMERICANO 200ml - 0.09\$
 - CAPPUCCINO 200ml - 0.09\$
 - MACCHIATO 200ml - 0.09\$
 - ESPRESSO 100ml - 0.09\$
 - MOCHA 200ml - 0.09\$



the Eatery







DRIVE THRU

the
Eatery
by market

en**market**







SNYDER'S
of Hanover
\$2.50 FOR 2
Snyder's of Hanover
Snyder's of Hanover

89
CHEWY ICE
89
CHEWY ICE

chiller

chiller

fresh to-go!





design done right

© 2020 Paragon Solutions

AWARD WINNER

Best Original Design
Convenience Store News 2019



SUB-BRANDS



**the
Eatery**
@enmarket





design done right

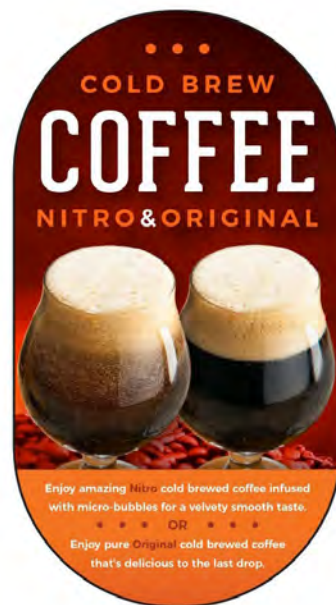
Dragon Solutions



design done right

© 2020 Paragon Solutions

BEVERAGES









CAR WASH



marketwash



CAR WASH

Ultimate FOAM BATH & 3-STEP PRESSURE UNDERCARRIAGE WASH WHEEL CLEANER SOLUTION WHEEL SCRUB DUAL BRUSH	TO FOAM CONDITIONER HIGH PRESSURE WASH DUAL LANCE SPRAYED WASH SOFT FREE RINSE POWER DRY	\$9
Touch Free FOAM BATH & 3-STEP PRESSURE UNDERCARRIAGE WASH WHEEL CLEANER SOLUTION WHEEL SCRUB DUAL BRUSH	TO FOAM CONDITIONER HIGH PRESSURE WASH SPOT FREE RINSE POWER DRY	\$8
Deluxe FOAM BATH PRESSURE WHEEL CLEANER SOLUTION WHEEL SCRUB DOUBLE AND WHIPPED WASH SPOT FREE RINSE POWER DRY		\$7
Express FOAM BATH PRESSURE DOUBLE AND WHIPPED WASH SPOT FREE RINSE NO POWER DRY		\$5

Soft Touch & Touch Free

marketwash



design done right

© 2020 Paragon Solutions



design done right

© 2020 Paragon Solutions



market wash+
Detailed wash & maintenance with
flexible, no-appointment-needed for:

- Antennas
- Bug shields
- Luggage racks
- Loose debris in truck bed
- Previous damages
- Non-factory items
- Running boards
- Vehicles older than 5 years

Thanks to washing with market wash+

market wash+

Join Our UNLIMITED MEMBERSHIP

featuring

- envy+
- shine+
- clean+
- unlimited member

NEUTRAL
WAXED CARE
OFF ROAD
HANDLED CARE

FORECOURT



DISPENSER GRAPHICS



- 1 V2 - Diesel/Unleaded Valance
Size 62.75" w x 12" h x 30.125" d
- 2 LD1 - Standard Lower Door
Size 22.9" h x 43.5" w
- 3 PT1 - Pump Topper Frame
Size 12" h x 20" w
- 4 D1 - Pump Number Decals
Size 3" h
- 5 D2 - Please Park Decal
Size 2" h x 3.25" w
- 6 D3 - Cash Card Discount Decal
Size 6" h x 7" w
- 7 D3 - Warning Decal
Size 6" h x 6" w
- 8 D4 - Safety and Information Decal
Size 6" h x 12" w
- 9 D5 - 10% Ethanol Decal
Size 1" h x 3" w
- 10 D6 - Pre Pay Decal
Size 2" h x 3" w
- 11 D7 - Credit Cards Decal
Size 3" h x 4" w
- 12 D8 - Unleaded Fuel Grade Decals
Size 8" h x 2.5" w
- 13 D9 - Octane Rating Decal
Size 2.5" h x 3" w
- 14 D10 - Diesel Fuel Decal
Size 8" h x 2.5" w
- 15 D11 - Diesel Nozzle Cradle Decal
Size 20" h x 6.75" w
- 16 D12 - Unleaded Nozzle Cradle Decal
Size 20" h x 6.75" w



enmarket

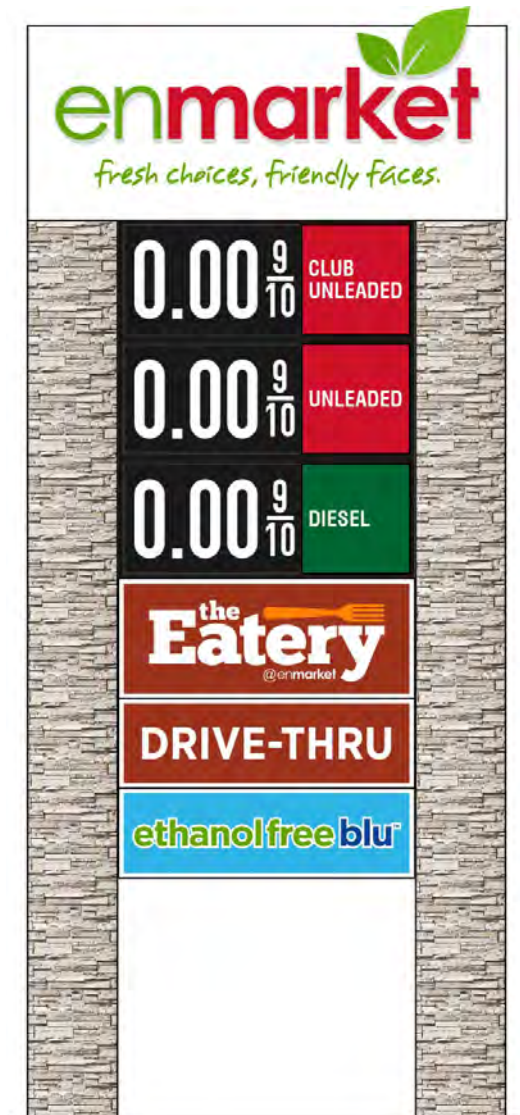
the Eatery

enmarket

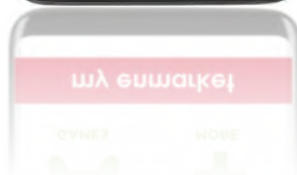
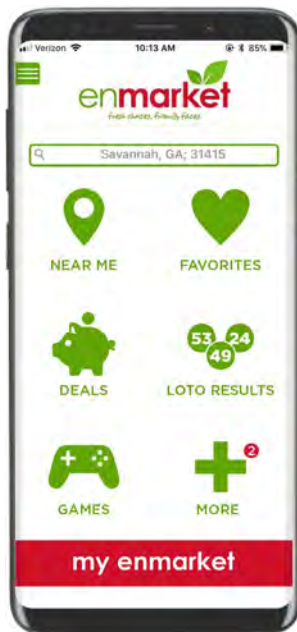
design done right

© 2020 Paragon Solutions





TOUCHPOINTS





enmarket
Fresh choices, friendly faces.

**EXPERIENCE
A NEW KIND
OF CONVENIENCE**

Experience the NEW







Thank You!